



Monash University Malaysia

ENE 3608: Environmental Impact Assessment & Management System

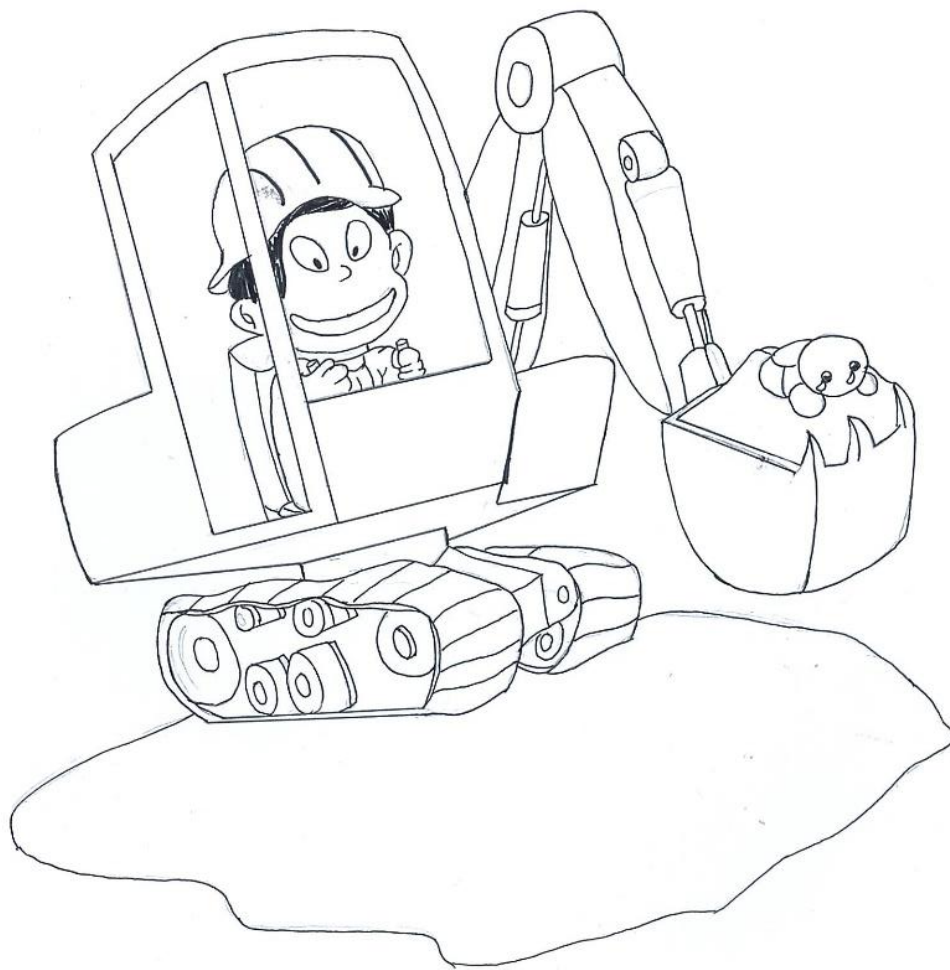
Visualising Environmental Impact: Land Reclamation

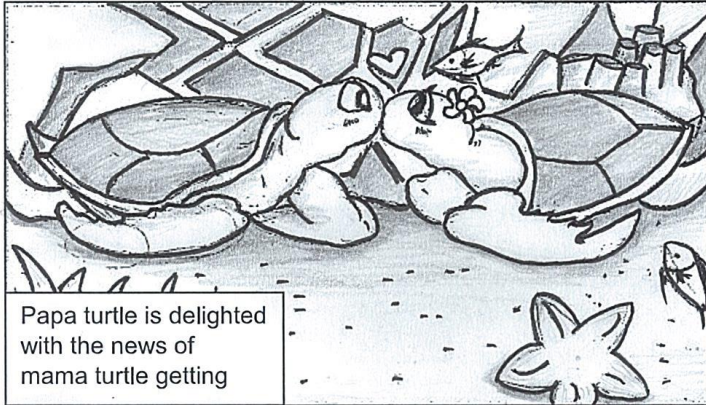
Creative Design & Story By:

Name
Mohamed Faadil
Haitham Al Ghafri
Chua Jingxuan
Mohd Shafie Mohd Ainal
Sarveswaren Mohana Kumar
Harnyi Kang
Yajie Gao

Idea Inspired & Developed By: Dr. Poovarasi Balan

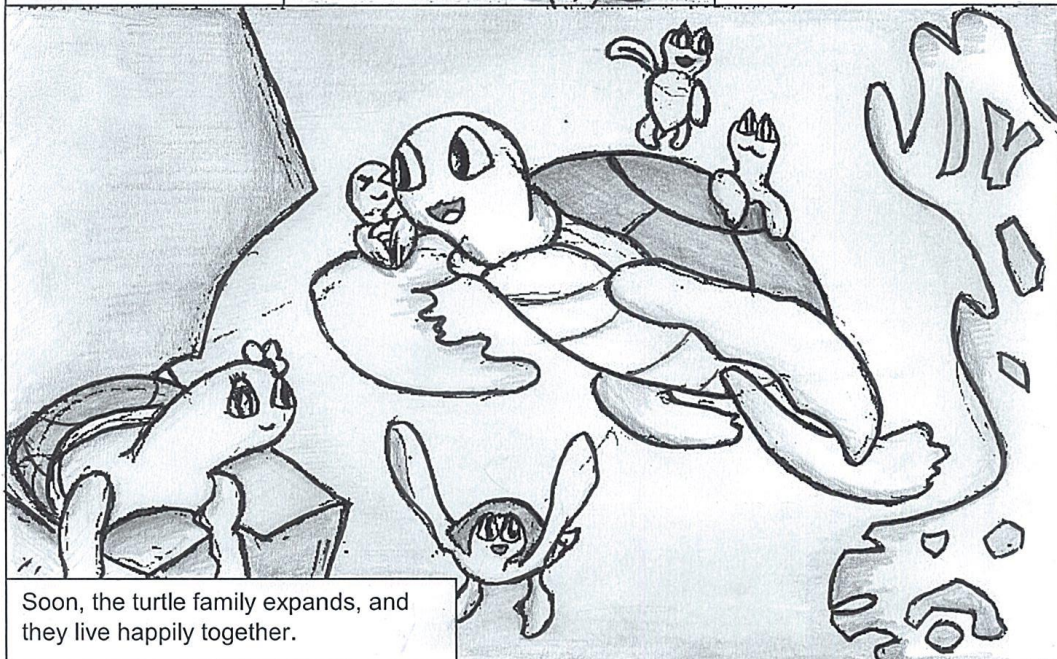
Turtle's Home





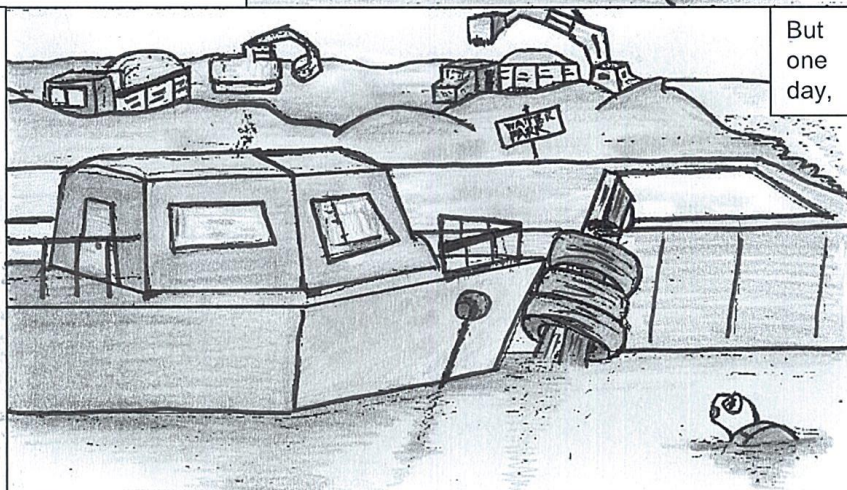
Papa turtle is delighted with the news of mama turtle getting

LAND RECLAMATION
LEADS TURTLE
FAMILY HOMELESS

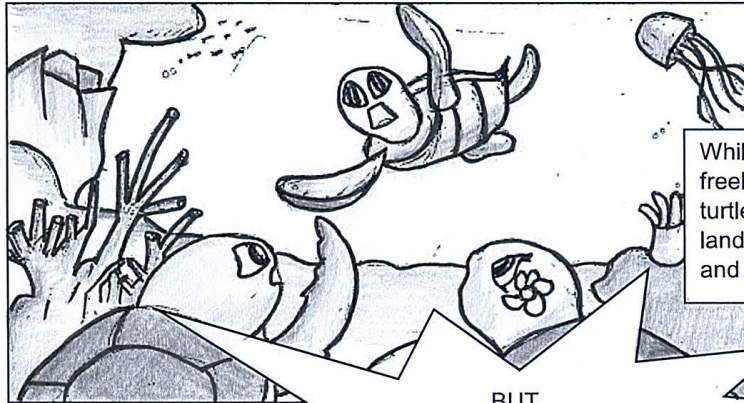


Soon, the turtle family expands, and they live happily together.

In the outer world, land reclamation activity is actively ongoing close by the turtle family's habitat.



But one day,



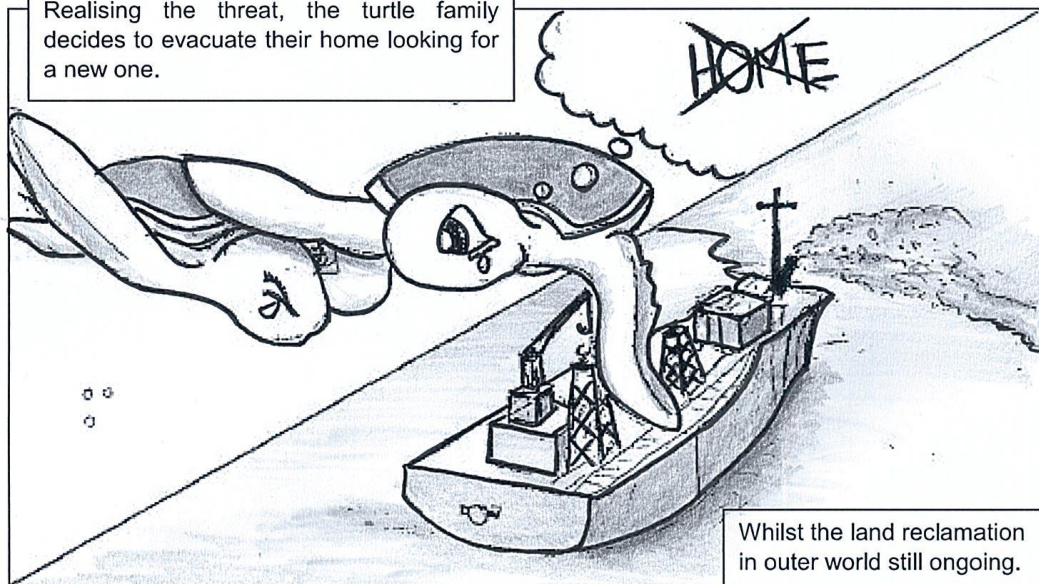
While swimming about freely, one of the baby turtles notices the ongoing land reclamation activity and informs the parents.

BUT
EVERYTHING IS
TOO LATE!!!

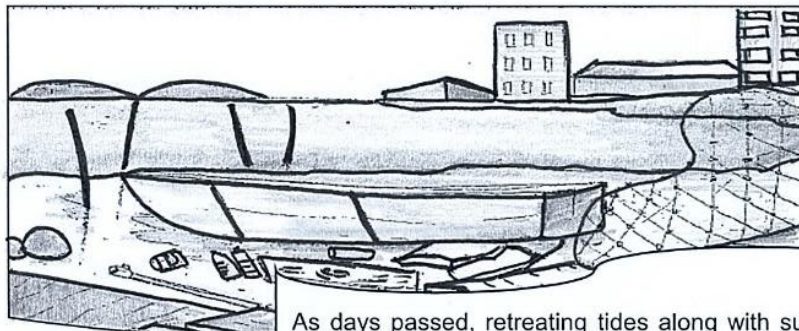


As days go by, situation gets serious as the reclamation activity leads to pollution.

Realising the threat, the turtle family decides to evacuate their home looking for a new one.

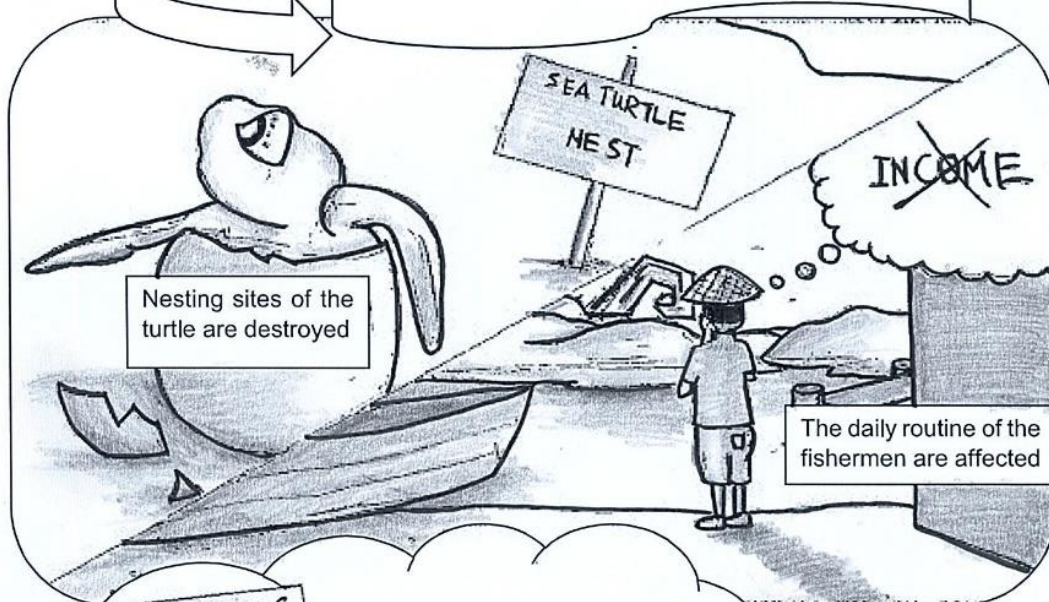


Whilst the land reclamation in outer world still ongoing.



As days passed, retreating tides along with suspended sediments and waste from reclamation activities resulted in boats left aground and further polluting the water body.

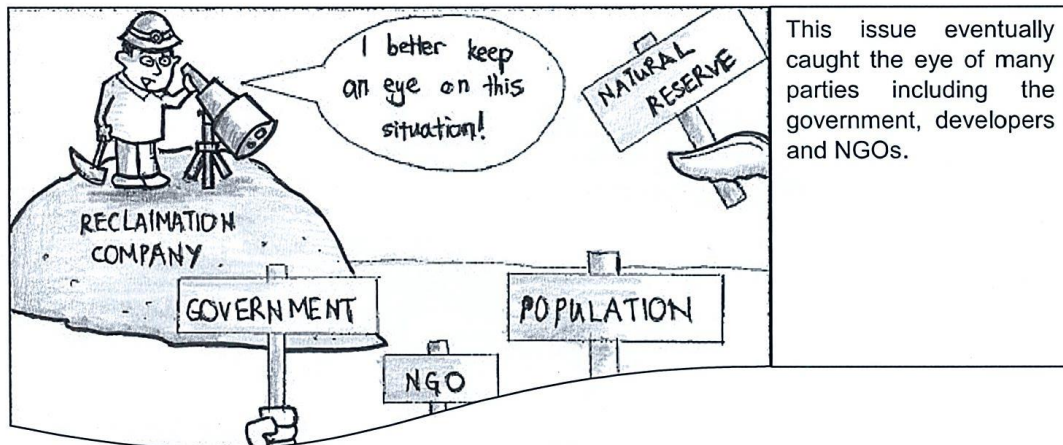
AS A RESULT



HINK OF US
'FISHERMEN'
NO RECLAMATION!

WHERE IS THE
EIA?

Public opted for protests and demonstrations calling for actions to protect the interests of both the turtles and the fishing community.

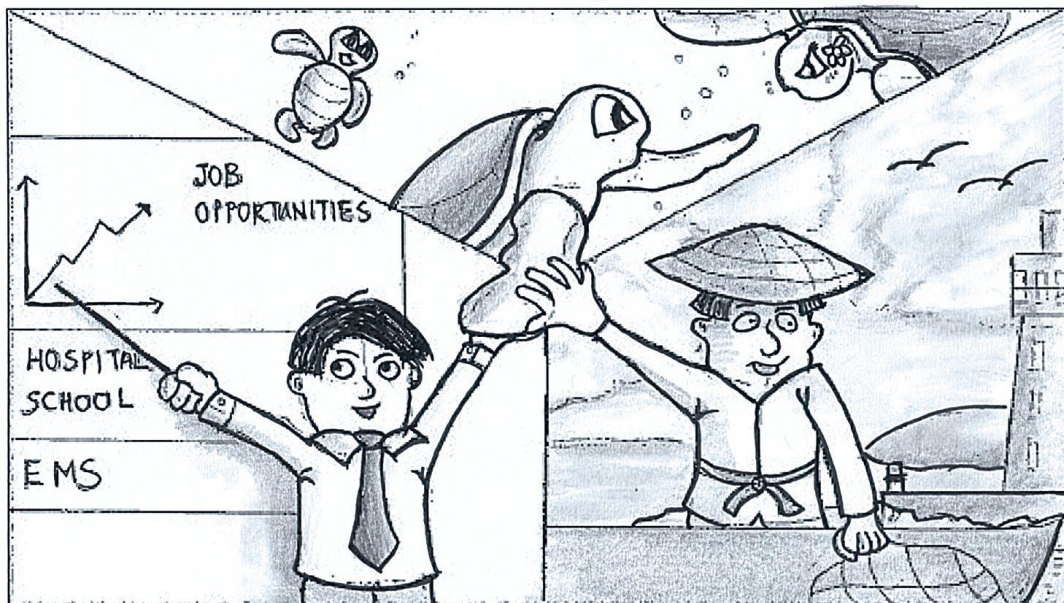


This issue eventually caught the eye of many parties including the government, developers and NGOs.



DOE then steps us its enforcement to curb the issue at hand.

By making it compulsory for developers to conduct stringent environmental assessment prior to development.



Following systematic development through regulated environmental assessment, the interests of the public and environment are protected.

THE END

**KEEP
CALM**

AND

**Stop Land
Reclamation**